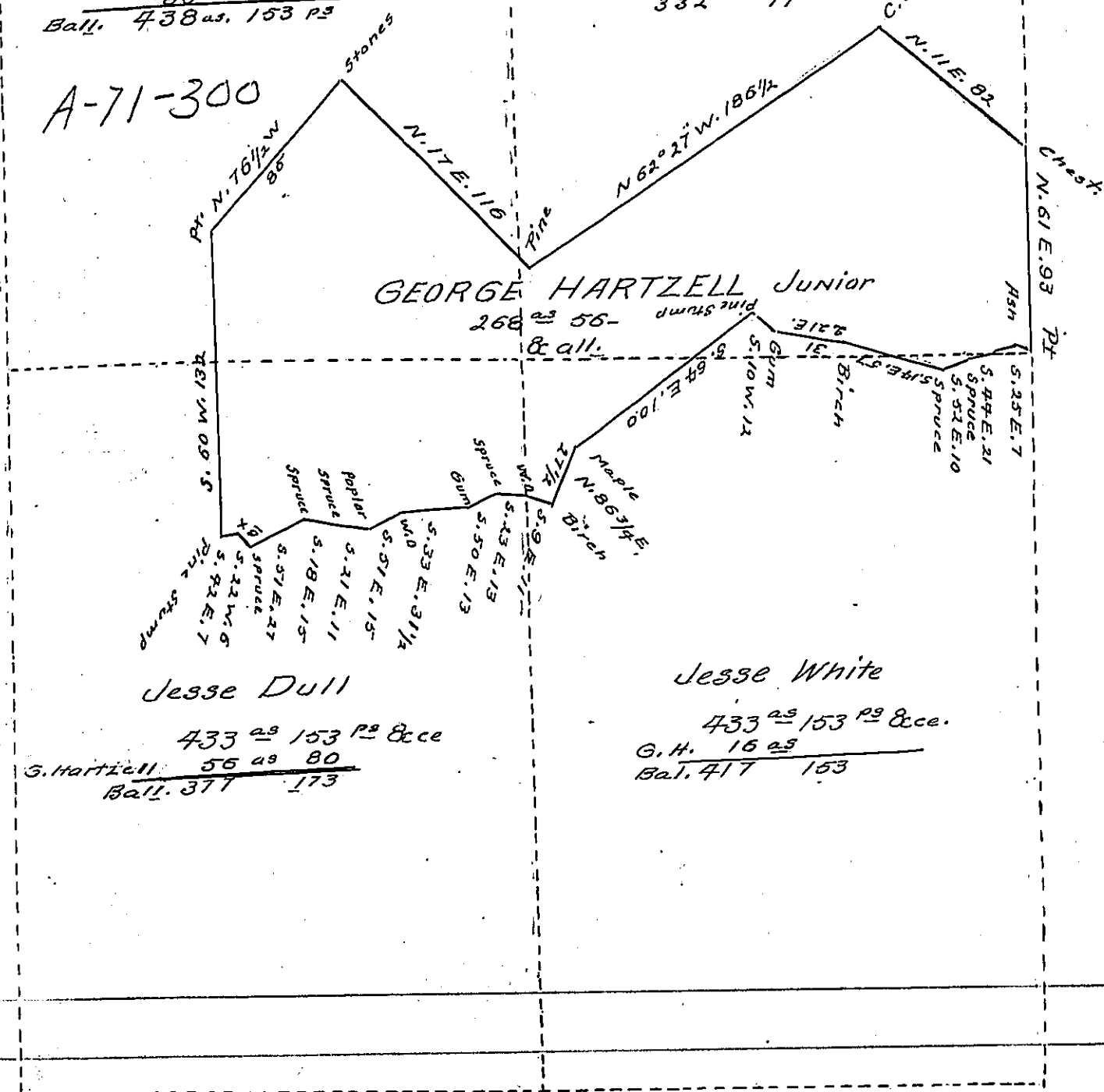


Jesse Bonland  
 Geo. Hartzell 433<sup>as</sup> 153<sup>ps</sup> & all.  
 95"  
 Bal. 438<sup>as</sup> 153<sup>ps</sup>

Jesse Stroud  
 433<sup>as</sup> 153<sup>ps</sup> & all.  
 Geo. H. 101 135-  
 332 17

A-71-300



Jesse Dull  
 433<sup>as</sup> 153<sup>ps</sup> & cce.  
 G. Hartzell 56<sup>as</sup> 80  
 Bal. 377 173

Jesse White  
 433<sup>as</sup> 153<sup>ps</sup> & cce.  
 G. H. 16<sup>as</sup>  
 Bal. 417 153

Situate in Logan Township Blair County Containing 268<sup>as</sup>  
 56 ps. & allowance of Six per cent for Roads &c. being part of fo-  
 ur tracts of land warranted in names of "Jesse Bonland" Jesse  
 Stroud" Jesse Dull & Jesse White, surveyed originally in  
 November 1794 on Warrants dated 26<sup>th</sup> December 1793.

Resurveyed September the 5<sup>th</sup> 1851 for George Hartzell Jr. -  
 with a view to procuring a Patent

James L. Gwin C.S.

To J. Porter Brawley Esqr.  
 Surveyor General

IN TESTIMONY that the above is a copy of the original remaining on file in  
 the Department of Internal Affairs of Pennsylvania, made  
 conformably to an Act of Assembly approved the 16th day of  
 February, 1833, I have hereunto set my Hand and caused  
 the Seal of said Department to be affixed at Harrisburg,  
 this Ninth day of August 1904

*Isaac D Brown*  
 Secretary of Internal Affairs.